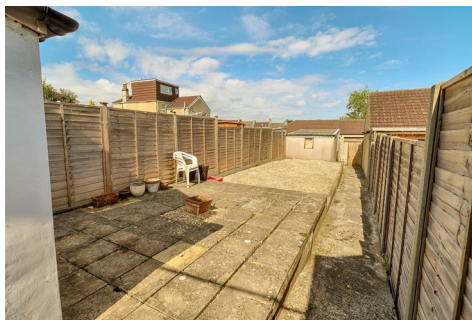




ASPIRE

— TO MOVE —



Mayfield Road, Bath, BA2

Four bedroom student property located in the popular Oldfield Park area of Bath. Available from the 24th August 2026

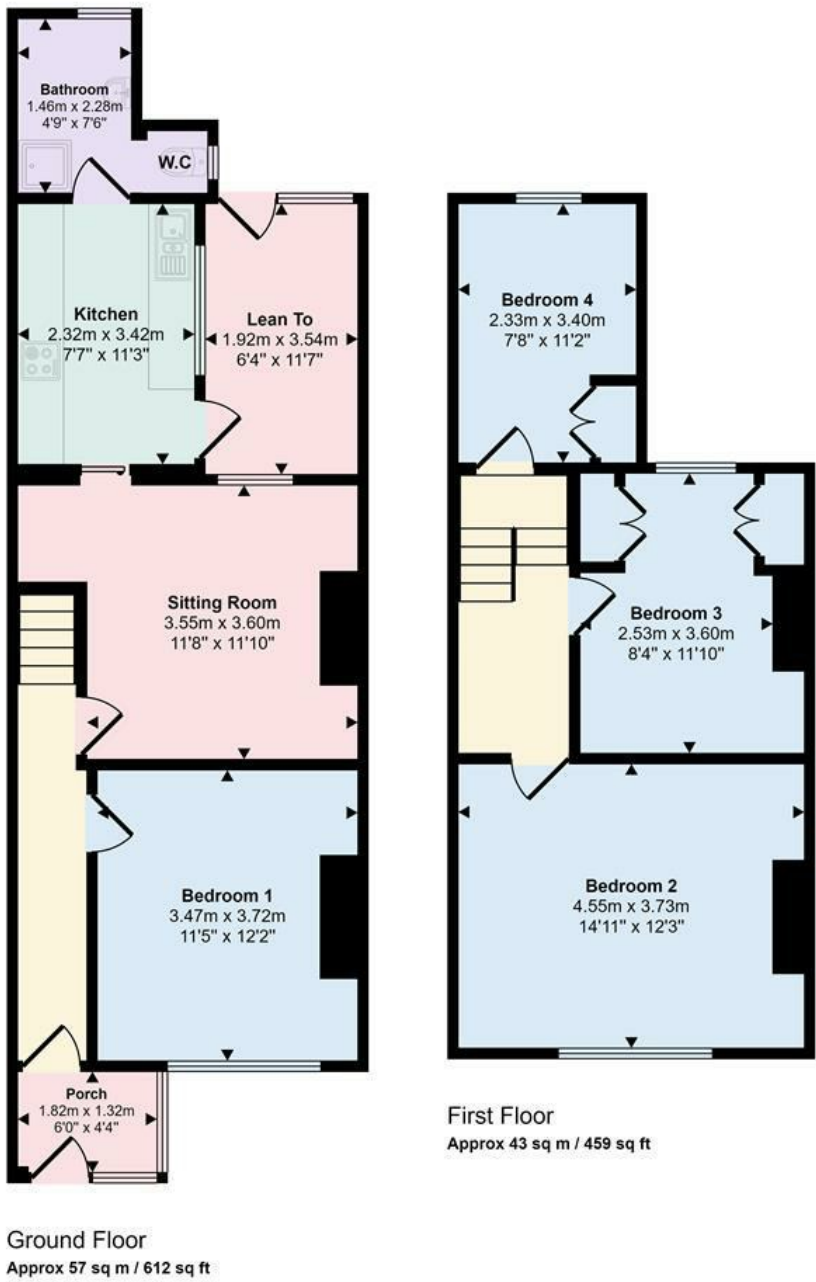
Mayfield Road is located in Oldfield Park and offers great access to local amenities on Moorland Road 0.1 miles away. There is a bus stop 50 meters from the front door.

£3,200 PCM

- Student property
- Furnished
- Four bedrooms
- Available 24th August 2026
- Holding deposit - one weeks worth of rent - £738.00
- Council Tax - D - if applicable - £2,706.67 annually
- Prime position
- West facing garden
- 12 months periodic tenancy

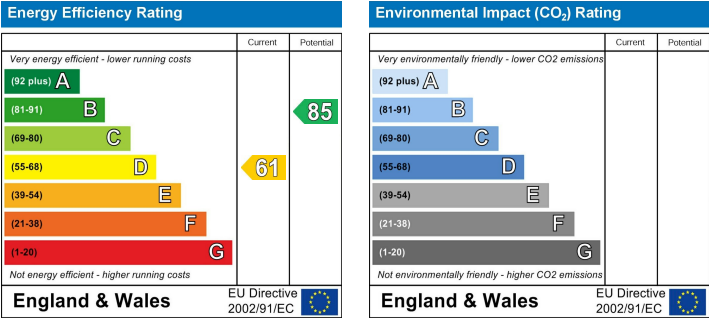
Floor Plans

Approx Gross Internal Area
99 sq m / 1071 sq ft



This floorplan is only for illustrative purposes and is not to scale. Measurements of rooms, doors, windows, and any items are approximate and no responsibility is taken for any error, omission or mis-statement. Icons of items such as bathroom suites are representations only and may not look like the real items. Made with Made Snappy 360.

Energy Performance Graph



These particulars, whilst believed to be accurate are set out as a general outline only for guidance and do not constitute any part of an offer or contract. Intending purchasers should not rely on them as statements of representation of fact, but must satisfy themselves by inspection or otherwise as to their accuracy. No person in this firms employment has the authority to make or give any representation or warranty in respect of the property.